

## TERRITORIAL PERFORMANCE COUNTY REPORT:

### ALTA FLORESTA D'OESTE (1100015)

State: **Rondônia**

#### FOREST COVER

Current Forest Cover (2012): **12345.67 km<sup>2</sup>**

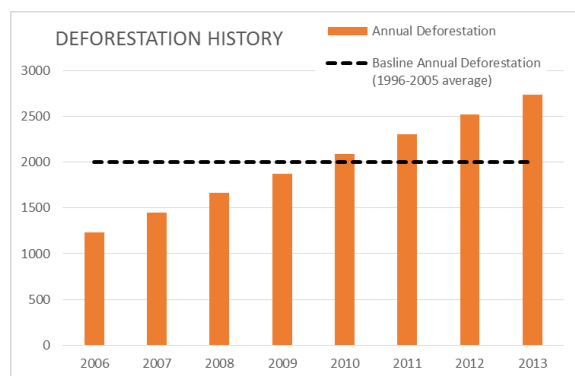
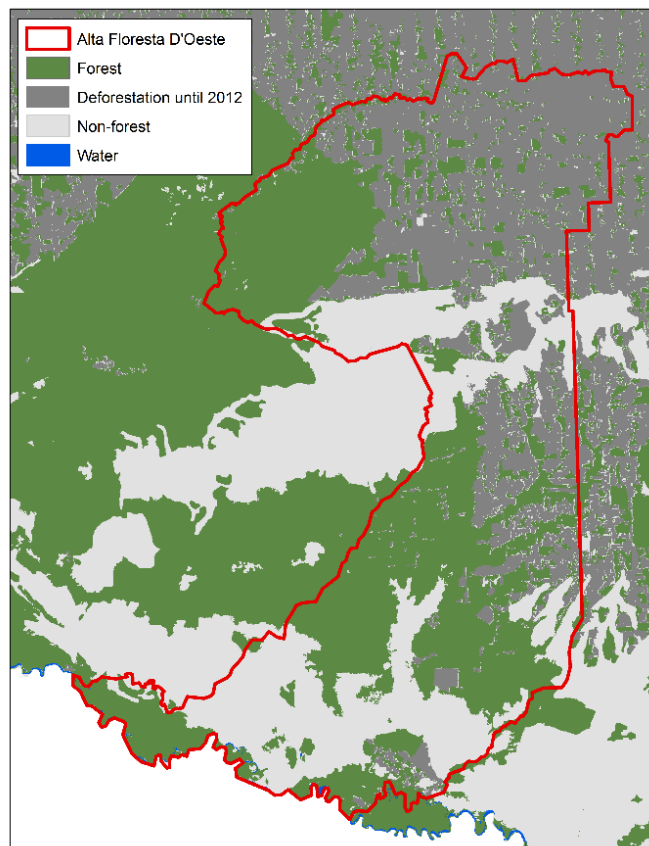
Current Percentage of Forest Cover (2012): **34%**

County Classification: **Frontier**

#### DEFORESTATION

Baseline Deforestation Rate: **2000 km<sup>2</sup>**

	Annual Deforestation (km <sup>2</sup> )	Change in deforestation (km <sup>2</sup> )	% change from baseline
2006	<b>1234</b>	<b>-766</b>	<b>-38%</b>
2007	<b>1448</b>	<b>-552</b>	<b>-28%</b>
2008	<b>1662</b>	<b>-338</b>	<b>-17%</b>
2009	<b>1876</b>	<b>-124</b>	<b>-6%</b>
2010	<b>2090</b>	<b>90</b>	<b>5%</b>
2011	<b>2304</b>	<b>304</b>	<b>15%</b>
2012	<b>2518</b>	<b>518</b>	<b>26%</b>
2013	<b>2732</b>	<b>732</b>	<b>37%</b>



#### PRODUCTION

Baseline Soy production (2000-2010): **30 tons**

Percent Change in Soy production (2008-2012 since baseline): **-100%**

Baseline Cattle production (2000-2010): **290212 head of cattle**

Percent Change in Cattle production (2008-2012 since baseline): **25%**

#### LABOR

Total forced labor occurrences (2010-2013): **1**

#### TERRITORIAL PERFORMANCE INDICATORS

Deforestation Indicator (>80% reduction from baseline in 2013 in deforestation)	<b>No</b>
Production Indicator (>10% increase from baseline in beef and soy production in 2008-2012)	<b>No</b>
Social Indicator (No forced labor occurrences from 2010-2013)	<b>No</b>
Combined Indicator (2013)	<b>No</b>

